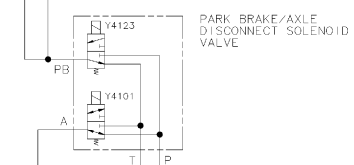
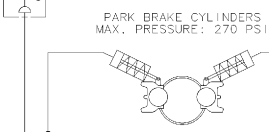


PORT	CIRCUIT
1	RETURN
2	RETURN
3	PISTON PUMP #1
4	PISTON PUMP #2
5	CASE DRAIN
6	STEER, FRONT-LEFT
7	STEER, FRONT-RIGHT
8	LOAD SENSE
9	BRAKES, FRONT
10	BRAKES, REAR

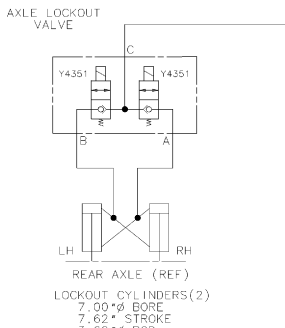
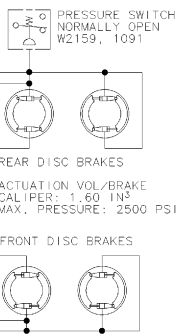
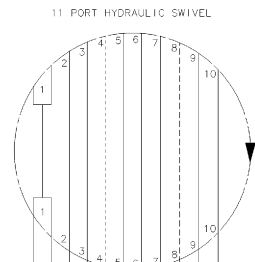
- NOTES:
1. Y - NUMBERS ARE SOLENOID REFERENCE NUMBERS.
 2. S - NUMBERS ARE SWITCH REFERENCE NUMBERS.
 3. W - NUMBERS ARE WIRE REFERENCE NUMBERS.

▲ PRESSURE BLEED OFF VALVE MUST BE OPENED TO BLEED OFF PRESSURE BEFORE QUICK COUPLERS ARE DISCONNECTED

PRESSURE SWITCH NORMALLY CLOSED S4120P



TRANSMISSION TORQUE CONVERTER



LOCKOUT CYLINDERS (2)
7.00" BORE
7.62" STROKE
3.62" ROD

FRONT STEER CYLINDERS
3.50" BORE
14.00" STROKE
1.75" ROD

REAR STEER CYLINDERS
3.50" BORE
14.00" STROKE
1.75" ROD

CAC FAN MOTOR
0.88 in³/REV

CAC CONTROL MANIFOLD

INLINE CHECK VALVE 45 PSI

INLINE CHECK VALVE 65 PSI

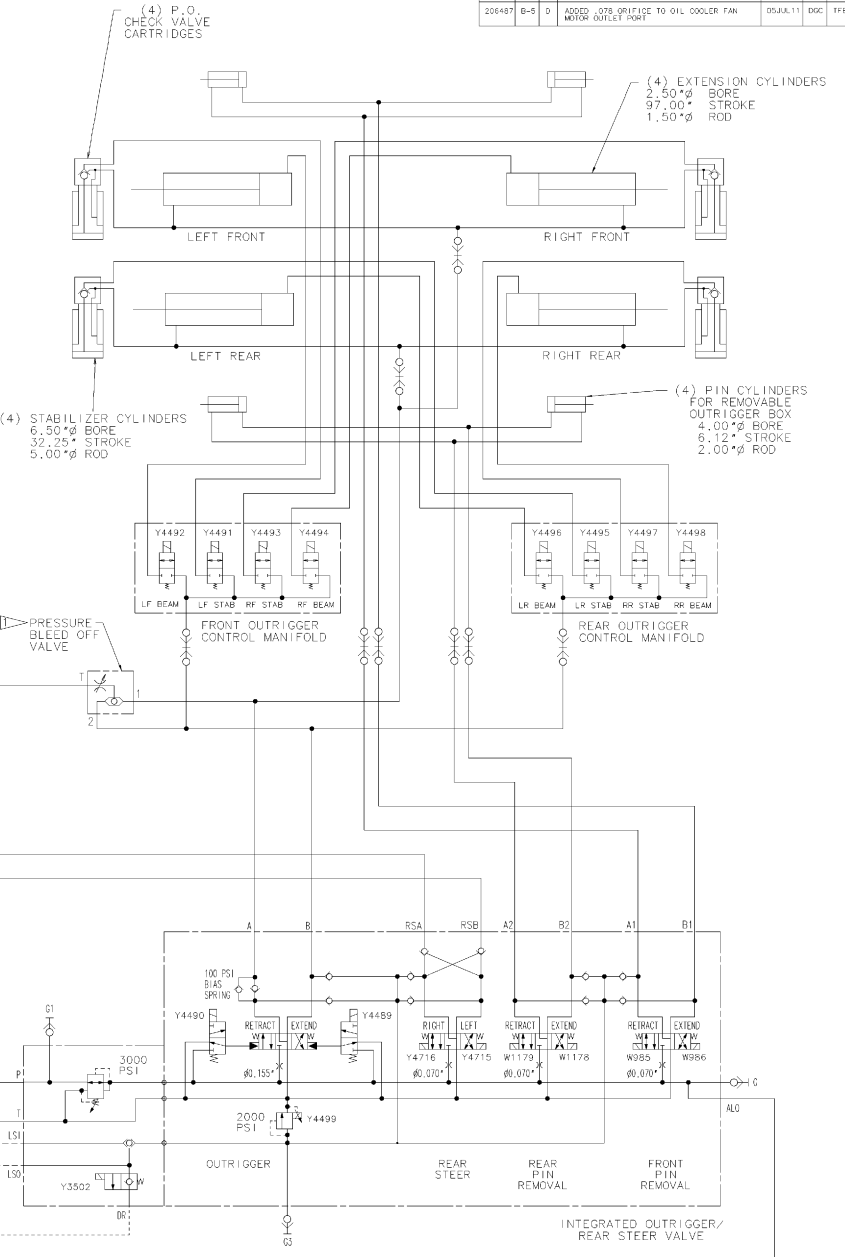
OIL COOLER FAN MOTOR TEMPERATURE SWITCH (NORMALLY CLOSED, OPENS AT 120° F) S0291Q

FAN MOTOR 0.67 in³/REV (11 CC/REV)

FILTER MAX FLOW RATE: 315 GPM
ISO CODE 17/14

HYD RESERVOIR 198 GAL TOTAL CAPACITY
173 GAL WORKING TO FULL MARK ON GAUGE

CARRIER

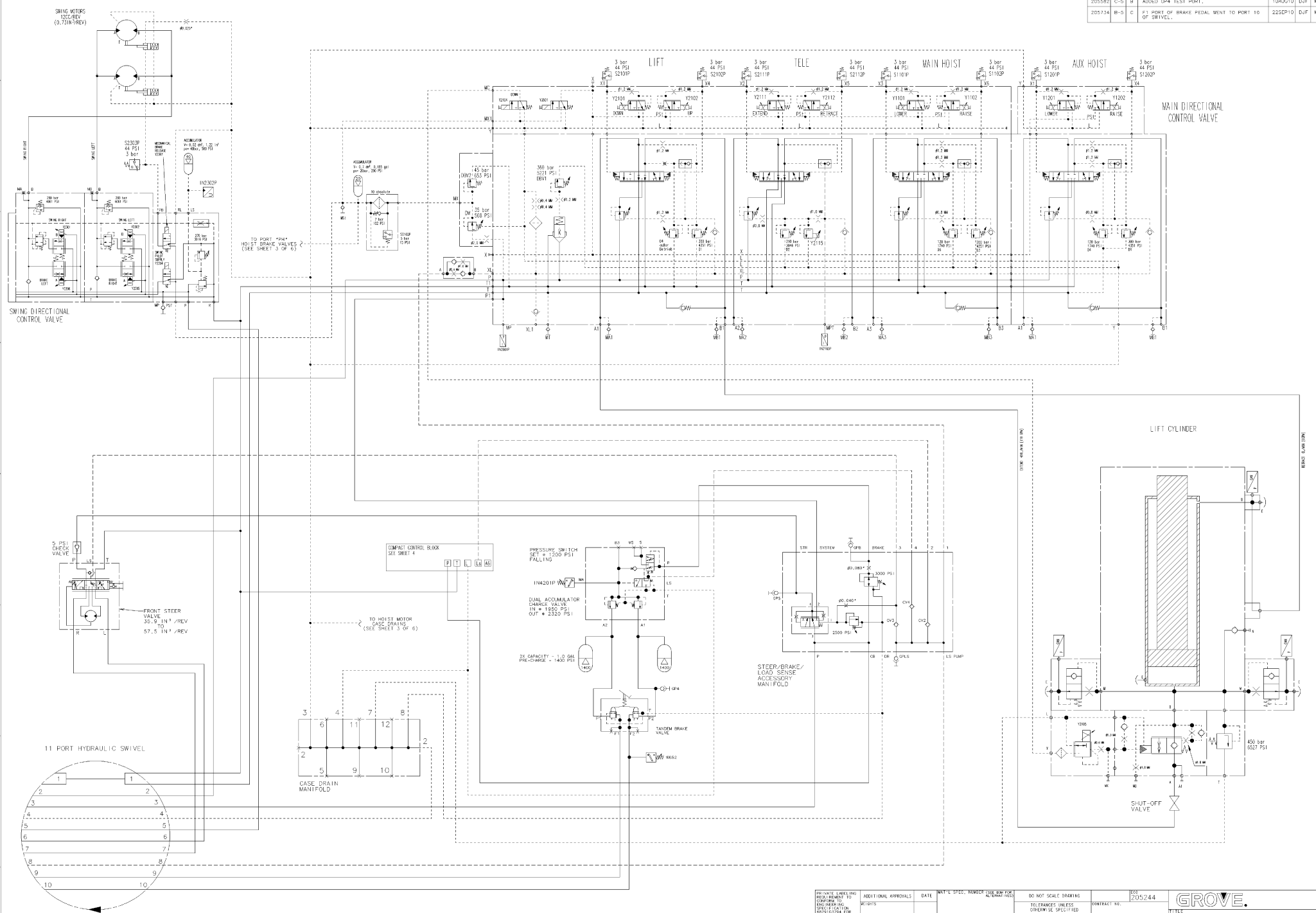


ECO	ZONE	REV	DESCRIPTION	DATE	BY	APP
205477	H-6	A	ADDED PRESSURE SWITCH	20MAY10	DLP	MM
206487	B-5	D	ADDED 028 ORIFICE TO OIL COOLER FAN MOTOR OUTLET PORT	05JUL11	DOC	TK

REVISIONS	DATE	BY	APP
ECO	ZONE	REV	DESCRIPTION

PROJECT NO.	ISS 205244
CONTRACT NO.	
DATE	
APPROVALS	
DESIGNER	30MAY10
CHECKER	30MAY10
APPROVED	30MAY10
DATE	30MAY10
SCALE	
TITLE	HYD SCHEM
PROJECT	HYD SYSTEM SCHEM RT9150E4
DWG NO.	80027755
REV	D

REVISIONS					
ECO	ZONE	REV	DESCRIPTION	DATE	BY
205582	C-5	B	ADDED GP4 TEST POINT.	10AUG10	DJF
205734	B-5	C	#1 POINT OF BRAKE PEDAL WENT TO PORT 10 OF SWIVEL.	22SEP10	DJF

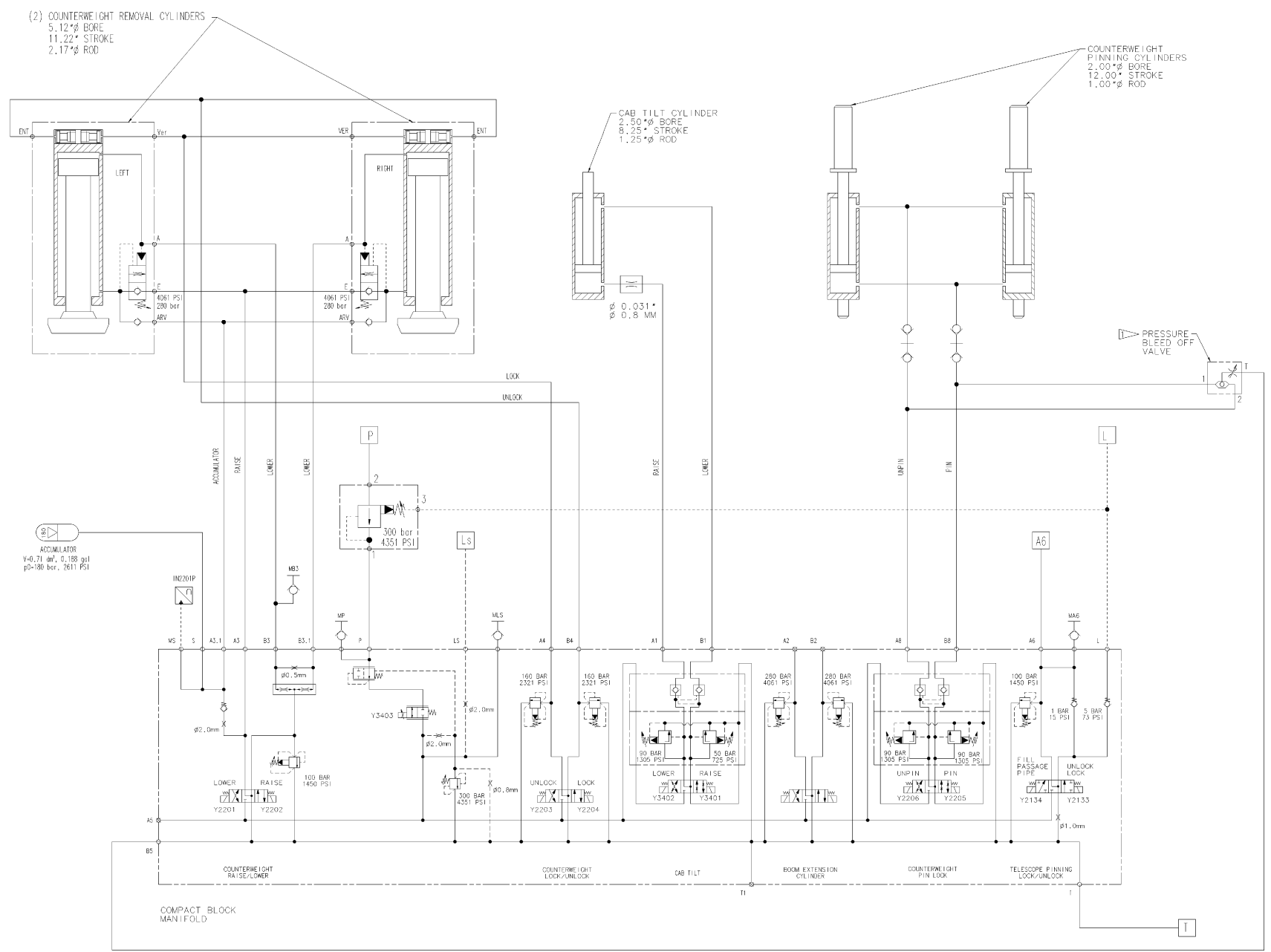


SUPERSTRUCTURE (SEE SHT 3 FOR CONTINUATION)

PROVIDE ALL DIMENSIONS AND SPECIFICATIONS FOR THE SUPERSTRUCTURE. THE SUPERSTRUCTURE SHALL BE DESIGNED TO SUPPORT THE CRANE AND ALL LOADS. THE SUPERSTRUCTURE SHALL BE DESIGNED TO SUPPORT THE CRANE AND ALL LOADS. THE SUPERSTRUCTURE SHALL BE DESIGNED TO SUPPORT THE CRANE AND ALL LOADS.

PRIVATE LABELING PROHIBITED TO COMPANY LOGO SPECIFICATION PROHIBITED FOR COMPANY LOGO IN 02050-01-01	ADDITIONAL APPROVALS DATE APPROVALS	DATE 3RD ANGLE PROJECTION RT9150E4	INT'L SPEC. NUMBER RT9150E4	USE FOR ALTERNATE	DO NOT SCALE DRAWING IN DIM. OCC. PLACES 4.04" 2 PLACE DEC. 4.016" 3 PLACE DEC. +.02" ANGULAR DIM. N/A TO MATERIAL THICKNESS	CONTRACT NO. 205244	APPROVALS DATE 10/10/10 10/10/10 10/10/10 10/10/10	TITLE HYD SCHEM HYD SYSTEM SCHEM RT9150E4	DESIGNED BY E 12341	DRAWN BY 80027755	REV D
--	---	--	--------------------------------	----------------------	---	------------------------	---	---	------------------------	----------------------	----------

80027755 02



ACCUMULATOR
V-0.71 gal, 0.188 gal
p0-180 bar, 2611 PSI

COUNTERWEIGHT
PINNING CYLINDERS
2.00\"/>

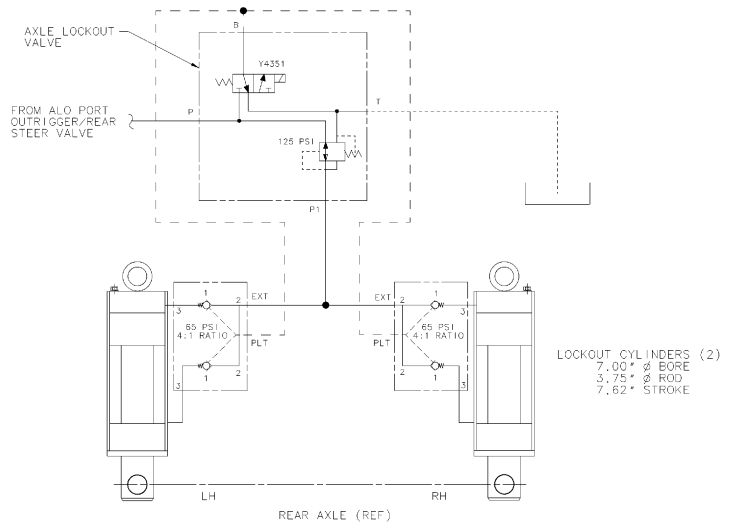
CAB TILT CYLINDER
2.50\"/>

PRESSURE
BLEED OFF
VALVE

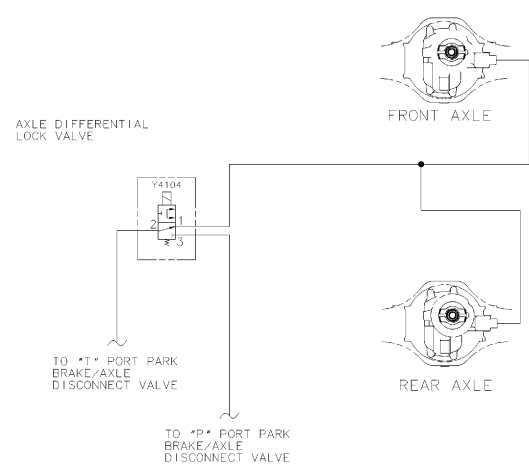
PROVIDE LABELING AND SPECIFICATIONS INFORMATION FOR DRAWING AND THE GENERAL WORKER OPERATING AND MAINTENANCE PERSONNEL. THIS DRAWING IS THE PROPERTY OF GROVE CRANES, INC. IT IS TO BE USED ONLY FOR THE PROJECT AND SITE SPECIFIC TO WHICH IT IS ISSUED. IT IS NOT TO BE REPRODUCED OR TRANSMITTED IN ANY FORM OR BY ANY MEANS, ELECTRONIC OR MECHANICAL, INCLUDING PHOTOCOPYING, RECORDING, OR BY ANY INFORMATION STORAGE AND RETRIEVAL SYSTEM. GROVE CRANES, INC. ACCEPTS NO LIABILITY FOR DAMAGES OF ANY KIND, INCLUDING CONSEQUENTIAL DAMAGES, ARISING FROM THE USE OF THIS DRAWING. THE USER OF THIS DRAWING SHALL BE RESPONSIBLE FOR OBTAINING ALL NECESSARY PERMITS AND APPROVALS FROM THE APPROPRIATE AUTHORITIES IN THE JURISDICTION OF THE PROJECT SITE.

SUPERSTRUCTURE CONTINUED

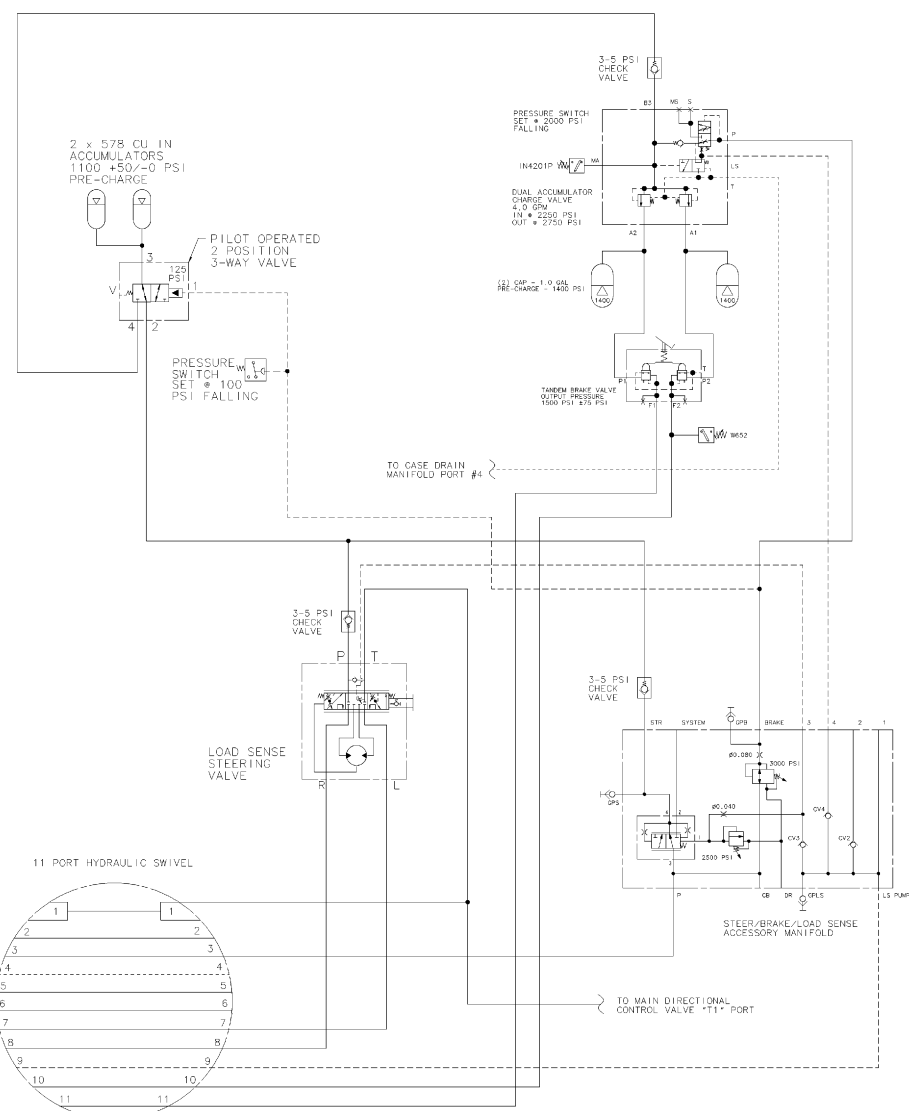
<p>PRIVATE LABELING REQUIRED TO COMPANY LOGO AND SPECIFICATION INFORMATION FOR COMPANY USE ONLY. THIS DRAWING IS THE PROPERTY OF GROVE CRANES, INC. IT IS TO BE USED ONLY FOR THE PROJECT AND SITE SPECIFIC TO WHICH IT IS ISSUED. IT IS NOT TO BE REPRODUCED OR TRANSMITTED IN ANY FORM OR BY ANY MEANS, ELECTRONIC OR MECHANICAL, INCLUDING PHOTOCOPYING, RECORDING, OR BY ANY INFORMATION STORAGE AND RETRIEVAL SYSTEM. GROVE CRANES, INC. ACCEPTS NO LIABILITY FOR DAMAGES OF ANY KIND, INCLUDING CONSEQUENTIAL DAMAGES, ARISING FROM THE USE OF THIS DRAWING. THE USER OF THIS DRAWING SHALL BE RESPONSIBLE FOR OBTAINING ALL NECESSARY PERMITS AND APPROVALS FROM THE APPROPRIATE AUTHORITIES IN THE JURISDICTION OF THE PROJECT SITE.</p>	<p>ADDITIONAL APPROVALS</p>	<p>DATE</p>	<p>UNITS: SPEC. NUMBER USE DIM FOR ALTERNATE UNITS</p>	<p>DO NOT SCALE DRAWING</p>	<p>CONTRACT NO.</p>	<p>ISS 205244</p>
<p>3RD ANGLE PROJECTION</p>	<p>IN DIM ECC PLACES MM DIM</p>	<p>APPROVALS</p>	<p>DATE</p>	<p>HYD SCHEM</p>	<p>DATE</p>	<p>RT9150E4</p>
<p>IF IN DOUBT ASK, REMOVE ALL RIBBS AND SHARP EDGES</p>	<p>MODEL (FIRST USED)</p>	<p>ANGULAR DIM 12"</p>	<p>APPROVED BY MILLER</p>	<p>DATE</p>	<p>80027755</p>	<p>REV D</p>
<p>RT9150E4</p>	<p>N/A TO MATERIAL THICKNESS</p>	<p>SCALE</p>	<p>PERCENT</p>	<p>1ST OF 06</p>	<p>CAD-1 DWG</p>	<p></p>



LOCKOUT CYL'S FOR C.E.CONFORMITY (OPTIONAL)



CROSS AXLE DIFFERENTIAL LOCK (OPTIONAL)



SECONDARY FRONT STEER FOR C.E.CONFORMITY (OPTION)

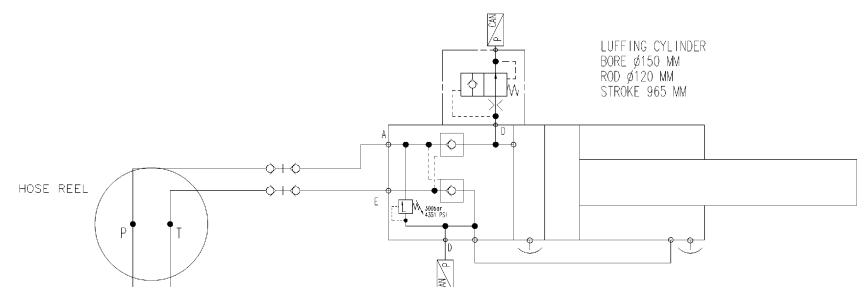
REVISIONS						
ECO	ZONE	REV	DESCRIPTION	DATE	BY	APPY

THESE DRAWINGS AND SPECIFICATIONS ARE THE PROPERTY OF GROVE. ANY REPRODUCTION OR USE OF THESE DRAWINGS OR SPECIFICATIONS WITHOUT THE WRITTEN PERMISSION OF GROVE IS STRICTLY PROHIBITED. GROVE ASSUMES NO LIABILITY FOR DAMAGES OF ANY KIND ARISING FROM THE USE OF THESE DRAWINGS OR SPECIFICATIONS. GROVE ACCEPTS NO LIABILITY FOR DAMAGES OF ANY KIND ARISING FROM THE USE OF THESE DRAWINGS OR SPECIFICATIONS. GROVE ASSUMES NO LIABILITY FOR DAMAGES OF ANY KIND ARISING FROM THE USE OF THESE DRAWINGS OR SPECIFICATIONS.

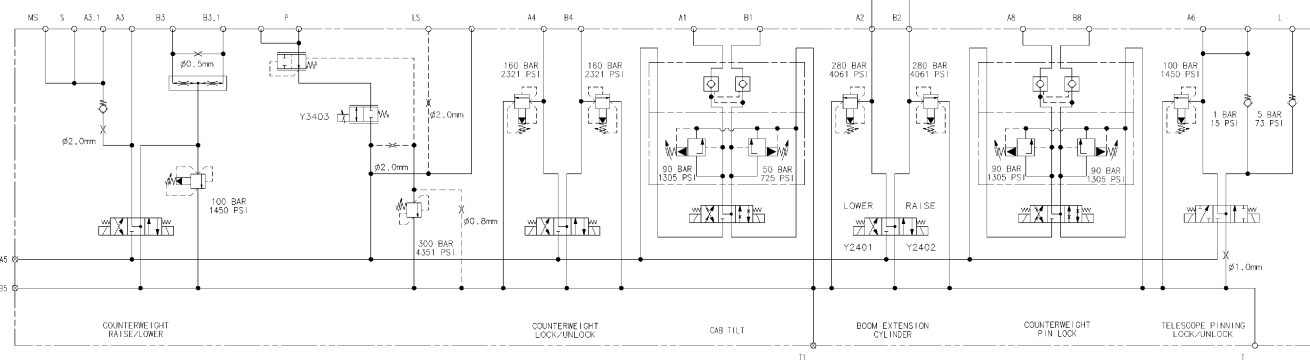
PRIVATE LABELING PROHIBITED TO COMPANY OR SPECIFIC CUSTOMER WITHOUT THE WRITTEN PERMISSION OF GROVE (IN ACCORDANCE WITH GROVE POLICY)	ADDITIONAL APPROVALS REVIEWED CHECKED DATE	DATE 3RD ANGLE PROJECTION MODEL (FIRST USED) RT9150E4	TITLE SPEC. NUMBER (SEE BOM FOR ALTERNATES) DO NOT SCALE DRAWING IN DIM. ECC. PLACES. MM DIM. N. P. A. DIMENSIONS ARE IN INCHES 4.00" = 2 PLACE DEC. +/-0.004 4.016" = 3 PLACE DEC. +/-0.000 +.015" ANGLULAR DIM. ±.015" N/A TO MATERIAL THICKNESS	CONTRACT NO.: 205244 APPROVALS DATE 12/31/11 12/31/11 12/31/11 12/31/11	ITC HYD SCHEM HYD SYSTEM SCHEM RT9150E4 80027755 12/31/11 12/31/11 12/31/11 12/31/11	REV D 1 OF 66
--	---	--	--	--	---	---------------------

80027755 031

REVISIONS						
ECO	ZONE	REV	DESCRIPTION	DATE	BY	APP



LUFFING CYLINDER
BORE 150 MM
ROD 120 MM
STROKE 965 MM



COMPACT BLOCK
MANIFOLD

HYDRAULIC BOOM EXTENSION (OPTION)

THE INFORMATION AND SPECIFICATIONS CONTAINED HEREIN ARE THE PROPERTY OF GROVE CRANES AND CONSTRUCTION EQUIPMENT. THIS DRAWING AND THE INFORMATION CONTAINED HEREIN IS TO BE USED ONLY FOR THE PROJECT AND SITE SPECIFICALLY IDENTIFIED HEREIN. IT IS NOT TO BE REPRODUCED, COPIED, OR TRANSMITTED IN ANY FORM OR BY ANY MEANS, ELECTRONIC OR MECHANICAL, INCLUDING PHOTOCOPYING, RECORDING, OR BY ANY INFORMATION STORAGE AND RETRIEVAL SYSTEM. GROVE CRANES AND CONSTRUCTION EQUIPMENT SHALL NOT BE RESPONSIBLE FOR ANY DAMAGE TO PERSONS OR PROPERTY ARISING FROM THE USE OF THIS DRAWING. THE USER SHALL BE RESPONSIBLE FOR OBTAINING ALL NECESSARY PERMITS AND APPROVALS FROM THE APPROPRIATE AUTHORITIES. GROVE CRANES AND CONSTRUCTION EQUIPMENT SHALL NOT BE RESPONSIBLE FOR ANY DAMAGE TO PERSONS OR PROPERTY ARISING FROM THE USE OF THIS DRAWING.

PRIVATE LABELING REQUIREMENTS TO BE MET BY THE CONTRACTOR FOR IDENTIFICATION PURPOSES ONLY (SEE 2005-05-01)	ADDITIONAL APPROVALS DATE	DATE	PARTS SPEC. NUMBER (SEE BOM FOR ALTERNATES)	DO NOT SCALE DRAWING TO DIMENSIONS UNLESS OTHERWISE SPECIFIED	CONTRACT NO. 205244	APPROVALS DATE	TITLE HYD SCHEM
MATCH / WELDING WELD / ELEC. / SEAL.	3RD ANGLE PROJECTION	IN. DIM. DEC. PLACES MM DIM. N. P. A. DIM. IN. DEC. PLACES DIM. IN.	WAVELENGTH (SEE 2005) RT9150E4	4.06" 2 PLACES DEC. 10.3MM 4.016" 3 PLACES DEC. 10.3MM +.12" ANGULAR DIM. 12"	APPROVED DATE	APPROVED DATE	HYD SYSTEM SCHEM RT9150E4 80027755
IF IN DOUBT ASK, REMOVE ALL RIBBS AND SHARP EDGES.	WAVELENGTH (SEE 2005) RT9150E4	N/A TO MATERIAL THICKNESS	APPROVED DATE	APPROVED DATE	APPROVED DATE	APPROVED DATE	HYD SYSTEM SCHEM RT9150E4 80027755

80027755 106